



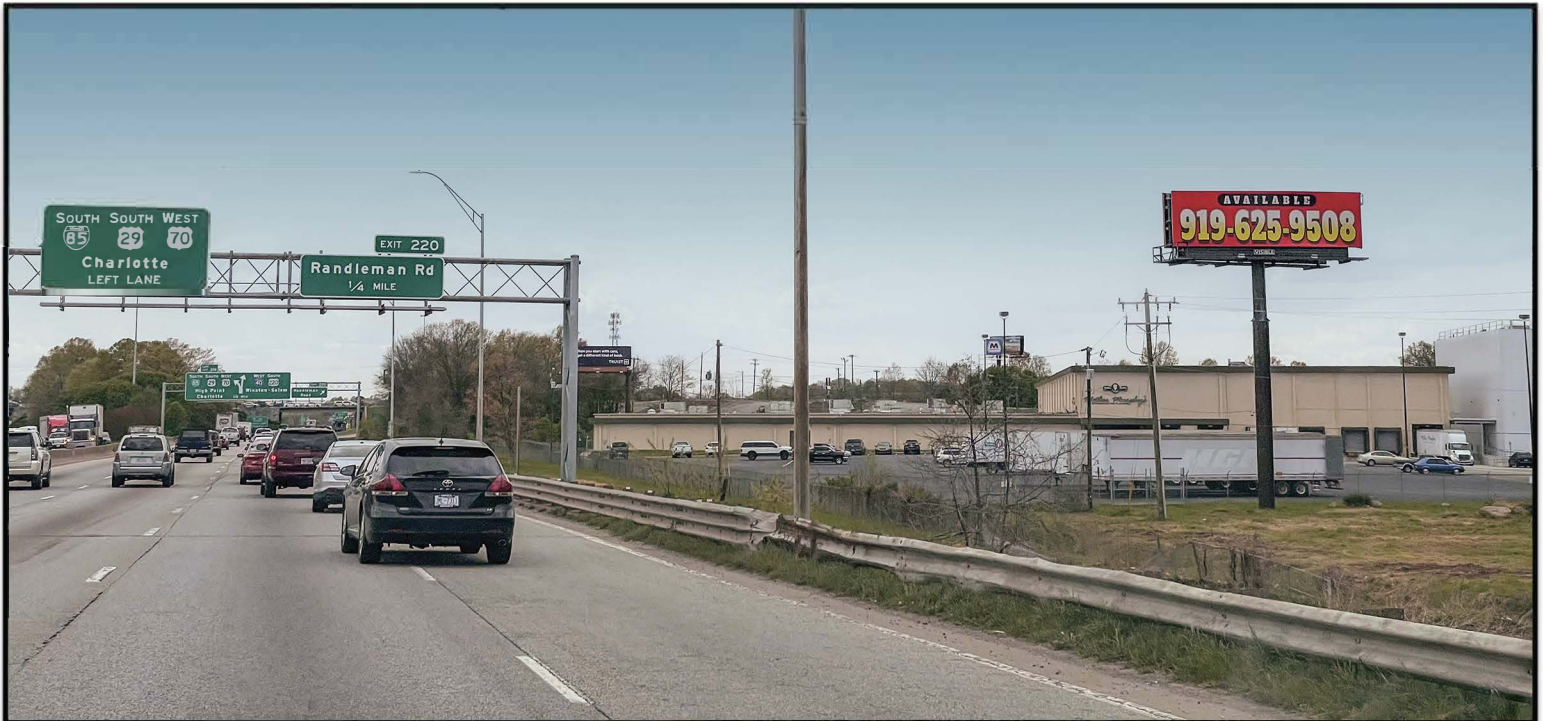
919-625-9508

# VISIBLE

## Outdoor Advertising

### 108 E - Greensboro-High Point-Winston Salem DMA

North side of Interstate 40, between Elm-Eugene St & Randleman Rd. Righthand read, facing east for westbound traffic. This location is in the heart of Greensboro on the most heavily traveled road in the area.



Display Size: 10'6" x 36'  
Traffic Count: 139,000 cars per day  
Illumination: Dusk to 12:00 AM  
Lat: 36.035561 Long: -79.795225

